

Last update: 07 Feb 2011

# Grumpy web server's Manual

Written by Mateusz Viste

*<http://www.viste-family.net/mateusz/software/grumpy/>*

## Table of Contents

Introduction.....	3
Installation (inetd).....	4
Installation (xinetd).....	5
Installation (Windows).....	6
Configuration file.....	7
Directory listing.....	10
HTTP Authentication.....	13
CGI support.....	15
Virtual Hosts configuration.....	17
Domain redirection.....	18
Automatic language detection.....	19
MIME support.....	20
Bandwidth stealing prevention.....	23
HTTP headers customization.....	24
Customizing error pages.....	25
Banning specific user-agents.....	26
Turn Grumpy into a HTTPS server.....	27
Frequently asked questions (FAQ).....	31
Legal mumbo-jumbo.....	32

## Introduction

Grumpy is a simple, easy to install, open-source web server for Linux and Windows. Grumpy is not a standalone daemon - it requires an inetd-compatible superserver to work.

Why one would prefer Grumpy over any other Linux web server, like Apache, Lighttp, Jigsaw...? Well, I wrote Grumpy primarily for fun, but it appears to have become a rather strong web server with some very good points: easy to install, lightweight, secure (as it doesn't support any dangerous features)...

The Grumpy web server is meant to be used for small projects, like home servers, some intranet applications, small-sized companies, etc. All the configuration is done via a single configuration file, which has very reasonable defaults. That makes Grumpy easily maintainable, and allows the administrator to have a full knowledge of what features are allowed/enabled on the server, and what's not. Grumpy supports CGI applications, and is entirely written in FreeBASIC.

Grumpy is a small project, with very few developers (to tell you the truth, I'm the only one).

## Installation (inetd)

Installing Grumpy on a Linux host is very easy. On the first place you will have to copy grumpy to /sbin or /usr/sbin, and grumpy.cfg to /etc. As mentioned previously, Grumpy needs an inetd-like superserver to work. If using the basic inetd, you will have to add the following line to /etc/inetd.conf:

```
www      stream      tcp      nowait      www-data      /sbin/grumpy      grumpy
```

Important things here are: "www", which is the name of service to bind to. You will have to check if the www service has its entry in /etc/services. "www-data" is the name of the user which has to be used to run the grumpy process. Never use root to run grumpy (or any other public daemon)! Obviously, you will have to check if the www-data user exists in your system (in Debian it exists by default), and let him write to /var/log/grumpy.log, read from /etc/grumpy.cfg and execute /sbin/grumpy. The easiest way to do that is simply to run "chown www-data file" on each file. When the inetd configuration is done, you'll have to restart the superserver (or the whole machine). In Debian, restarting inetd may be done by typing "kill -HUP `cat /var/run/inetd.pid`".

Don't forget to put an index.htm (or index.html) file into your RootDir path (by default, the RootDir is /var/www/). Note, that you don't need to use any index file if you allow to browse directories (AllowDirListing=1 in /etc/grumpy.cfg).

## Installation (xinetd)

If your system is running xinetd, the first steps will be similar to the inetd case: on the first place you will have to copy grumpy to /sbin or /usr/sbin, and grumpy.cfg to /etc. The behavior of xinetd is very similar to inetd. However, the configuration file has a different syntax. Some distribution has an unique configuration file for xinetd, others uses separate files for each service (these files are usually in /etc/xinet.d/). In any case, you will need to add the such (or similar) lines to let xinetd know about Grumpy:

```
service www
{
    disable = no
    socket_type = stream
    protocol = tcp
    wait = no
    user = wwwrun
    server = /sbin/grumpy
    instances = 100
    per_source = 10
    log_type = FILE /var/log/xinetd-grumpy.log
    log_on_success = HOST PID DURATION
    log_on_failure = HOST
}
```

Important things here are: "service www", which is the name of service to bind to. You will have to check if the www service has its entry in /etc/services. "wwwrun" is the name of the user which has to be used to run the grumpy process. Never use root to run Grumpy (or any other public daemon)! However, you may want to use it for troubleshooting purpose. Obviously, you will have to check if the wwwrun user exists in your system, and let him write to /var/log/grumpy.log, read from /etc/grumpy.cfg and execute /sbin/grumpy. The easiest way to do that is simply to run "chown wwwrun file" on each file. When the xinetd configuration is done, you'll have to restart the superserver (or the whole machine). In most distributions, restarting xinetd may be done by running "/etc/init.d/xinetd restart". For more details on available features, see the xinetd manual.

Don't forget to put an index.htm (or index.html) file into your RootDir path (by default, the RootDir is /var/www/). Note, that you don't need to use any index file if you allow to browse directories (AllowDirListing=1 in /etc/grumpy.cfg).

## Installation (Windows)

Although being primarily written for Linux, Grumpy is available for the Windows platform, too. I wouldn't recommend you to use Grumpy (nor any server application) on the Windows platform, but it's obviously up to you to make the choice. The Windows package of Grumpy contains all things which are required to run the http and gopher servers (executable file, an inetd-like wrapper, etc). All you have to do is launch one of the batch files "start-http.bat", "start-gopher.bat" (or both). These batch files will execute the inetd wrapper, binding Grumpy to a network socket.

As explained in the "Authentication" part of this manual, the Grumpy HTTP server requires a ".grumpy.auth" to be created in the directory which has to be password-protected. You will quickly notice, that Windows Explorer doesn't allow to create files beginning by a dot. That's why you will have to use any kind of trick to create the file. One way would be to run the "echo. >.grumpy.auth" command from within the command-line.

After being started, the Grumpy server will listen on the port 80 (http). If you would like to check whether it's active or not, you can simply type the "http://127.0.0.1/" address in your web browser.

Keep in mind, that Windows is not case-sensitive when it comes to handling file names. Therefore, a "http://server.net/file.html" request will return the same resource than "http://server.net/FILE.HTML" (there are big chances that you don't mind anyway).

Because Grumpy cannot share the same port with another TCP/IP application, you may need to stop or uninstall certain services first. These include (but are not limited to) other web servers, and firewall products such as BlackIce. Also, you should double-check your firewall's configuration, to avoid any filtering related trouble.

## Configuration file

The Grumpy's configuration file should be at /etc/grumpy.cfg (Linux) or in Grumpy's directory (Windows), and made readable by the user which will run Grumpy. It's a plain-text file, containing some tokens with values. Any line beginning by the "#" character is ignored. If, for some reasons, Grumpy would be unable to access/read his configuration file, he will take default values. Here's an example of a (well-commented) configuration file:

```
#####
#   CONFIGURATION FILE FOR THE GRUMPY WEB & GOPHER SERVER   #
#-----#
#   This file has two distinct parts. One for HTTP settings, #
#   and the other for the gopher configuration.               #
#####

#=====#
#       HTTP SERVER CONFIGURATION                           #
#=====#

## Set the logging verbosity ##
# 0 - No logging (not recommended, unless you really don't care about logs)
# 1 - Log basic informations, like Request code/answer code. (Default)
# 2 - Maximum verbose (log full requests + a summary of the answer)
Verbose=1

## Specify custom log files ##
# By default, Grumpy logs any events to /var/log/grumpy.log on Linux,
# and .\grumpy.log on Windows. Below, you can specify different log
# files to write to (you can use different files for HTTP events and
# Gopher requests).
HttpLogFile=
GopherLogFile=

## Allow/Disallow listing of directories ##
# If you allow directory listing, then Grumpy will list the content of
# directories which doesn't have any index.htm or index.html file. You will
# probably want to enable it, unless you are paranoid.
# 0 - Disabled
# 1 - Enabled (default)
AllowDirListing=1

## Directory listing custom CSS style ##
# All generated HTML directory listings are using CSS styles. To customize a
# bit the look of these listings, you can specify here a URL to your own CSS
# file (obviously, you will have to build it basing on the default style).
# Some examples:
#   DirListCSS=/mystyle.css
#   DirListCSS=http://www.myserver.net/style.css
DirListCSS=
```

```

## The server's root directory path. ##
# Default is /var/www
RootDir=/var/www

## QoS bandwith limitation ##
# This setting allows you to limit the transfer rate per file (in KiB/s).
# Eg. "QoS=5" means that Grumpy will serve files at a rate of max. 5 KiB/s.
# Note, that the QoS setting is set per file (an user could download one file
# at 5 KiB/s, two files at 10 KiB/s, etc...).
# 0 disables the QoS limitation (so Grumpy will serve files as fast as he can).
# Default is 0.
QoS=0

## Content-MD5 header ##
# The Content-MD5 header is a checksum of the file sent via HTTP. It allows
# the client to recompute a MD5 checksum of the received file by itself, and
# compare it to the one announced by the server. The use of a Content-MD5
# header improves the reliability of HTTP transmissions, however, it is a
# very CPU-demanding operation, therefore you should adjust it carefully.
# The following parameter sets the maximum size (in bytes) of files for which
# a Content-MD5 header will be generated. Setting it to 0 disables it.
ContentMD5MaxFileSize=0

## MIME support ##
# Grumpy features MIME support. MIME properties may be handled in two different
# ways: either automatically (Grumpy scans each file to find out what
# content-type to advertise) or user-defined (the user has to bind specific
# MIME types to given file extensions). Note, that if you define a given
# filetype, then this filetype won't be processed by AutoMIME anymore.
# There you can switch on/off the automatic MIME scanner (enabled by default,
# 1 = enabled, 0 = disabled):
AutoMIME=1
# Below you may add any custom filetype you need (see default settings to get
# the idea):
AddMimeType:css=text/css
AddMimeType:djvu=image/vnd.djvu
AddMimeType:dxif=image/vnd.dxf
AddMimeType:htm=text/html
AddMimeType:html=text/html

## Allow/disallow external referers ##
# If you would like to block some specific file types to be retrieved from
# domains different than the host of the request (often called "bandwidth
# stealing"), then use the setup below. Also, you can add exceptions for some
# chosen domains into a whitelist.
# Examples:
# BlockedMediaFromOtherReferer=(image/jpeg),(image/pjpeg),(image/png)
# RefererWhitelist=(www.domain1.net),(www.domain2.com)
BlockedMediaFromOtherReferer=
RefererWhitelist=

## Support for CGI applications. ##
# 0 - Disabled (default)
# 1 - Executes CGI, but only if the script has the *.cgi extension and is in
#     the /cgi-bin/ subdirectory
# 2 - Executes any file which have the *.cgi extension

```



```
#
# The CGI support in Grumpy is not standard. Read the Grumpy manual first.
# WARNING: AS ANY OTHER SERVER-SIDE CODE EXECUTION, THE CGI SUPPORT MAY
#          BE *VERY* DANGEROUS IF USED INCORRECTLY. ENABLE IT ONLY IF YOU
#          KNOW EXACTLY WHAT YOU ARE DOING!
CgiSupport=0

## Virtual Hosts configuration ##
# Grumpy supports the use of virtual hosts. Any virtual host has to be
# declared below. The syntax is the following:
# vhost:my_hostname=my_directory
#
# Eg. vhost:mywebsite.com=/var/www/website/ would declare a virtual host
# called "mywebsite.com", and will redirect any requests to that host
# to the directory /var/www/website/.
#vhost:mywebsite.com=/var/www/webiste/

## Redirect domains ##
# Here you may declare any redirection for a given domain. It's particularly
# useful if you have moved your website to another domain name and wants to
# keep the content available for users (note, that crawling robots will follow
# such redirects, too). A domain redirect will generate a 301 HTTP response for
# any request destined to the redirected domain.
# Syntax: Redirect:OldDomain=NewDomain
# Example:
# RedirectDomain:MyOldDomainName.net=www.MyNewFlashyDomainName.com

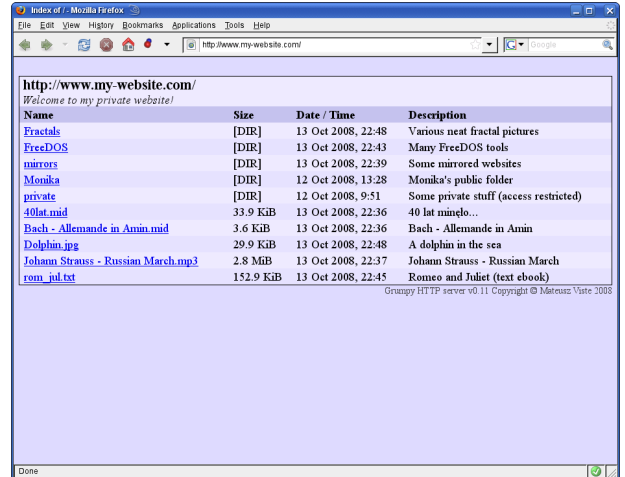
## Custom HTTP headers ##
# Below you may define few custom header. If set, these headers will be sent
# with any HTTP response to the client. If you leave them empty, they won't
# be sent.
# Example:
# x-powered-by=The Grumpy http & gopher server, (C) Mateusz Viste
x-powered-by=
x-hosted-by=
x-server-admin=
x-disclaimer=

## Banned User-Agents ##
# There you can specify some User-Agents you definitely do not want to
# accept HTTP requests from. Use that only for banning purpose, as the
# Grumpy server will be very impolite to requests coming from an
# user-agent specified below: it will make him wait for 2s, and answer
# by a 403 (Forbidden) code. All user-agents have to be delimited using
# a pipe character (|). Note, that Grumpy will check if the specified
# string is contained in the declared user-agent, therefore be careful
# when adding anything (for example, adding "net" there would make Grumpy
# deny requests from any User-Agent which contains "net" in his name).
BannedUserAgents=Nmap|libwww-perl|Morfeus|Toata dragostea|Brutus|DataCha0s

# [End of file here]
```

## Directory listing

Grumpy is able to list directories content on his own. That is, if there's no `index.html` nor `index.htm` file in the given directory, and you enabled directory listing in the configuration, then Grumpy will happily display an index, listing all files and subdirectories. Of course, if the directory requires authentication, Grumpy will ask for credentials first. Note, that the listing won't display any hidden resource (ie file or directory beginning by a dot). It won't display the "descript.ion" file either.



### Description tags

I guess you are wondering now, what's that « `descript.ion` » file for? Well, it's a text file that contains descriptions of the directory content. Grumpy will use it (if found) to fill the "Description" column of the listing. The structure of this file is very basic. Each entry has to be stored in one line: `element[tab]description`. It's very important to keep in mind that the delimiters are TABs, as it won't work with simple spaces (that's because you may have filenames containing spaces, so it would be confusing to allow spaces as delimiters). Here's a short example of a "descript.ion" file:

```
.      This directory contains some pictures of my dog
summer2008 Here are many photos from our summer 2008 holiday
ingrass.jpg Doggy in the grass
beach.jpg   Swimming dog
dream.jpg   Doggy felt asleep
```

The entry "." is describing the current directory (this description would appear in the bottom of the listing page). Of course, you can write characters specific to whatever language you speak, just make sure to save the `descript.ion` file as an UTF-8 encoded text file.

An important (well, maybe not THAT important, but rather "good to know") restriction of the "directory listing" feature is the fact, that Grumpy will display only the first 20'000 entries (not the first alphabetically, but rather the first in disk entries order). Therefore, if you have more than 20'000 elements (files and/or directories) in a single directory, you will probably prefer to build an indexing mechanism by yourself (eg. via a custom CGI script). Anyway, Grumpy will then display a big red warning stating that there are too many files to display, so you will immediately know what's going on.

### Customization

If you feel bored by the look of HTML directories listings generated by the Grumpy server,

then you could considerate customizing these listings. The generated HTML code is heavily using styles, and the Grumpy configuration file allows to set up a personalized CSS file via the "DirListCSS" parameter. Here is an example of such custom configuration:

```
DirListCSS=/mystyle.css
```

With this setting, Grumpy will redirect client browsers to the "/mystyle.css" CSS file. Obviously, it's up to you to make sure that this file exists, and contains properly formatted CSS directives. Note, that the "DirListCSS" parameter is a global setting, common to all declared virtual hosts – therefore, you would have to make sure to put the "mystyle.css" file into the root directory of each virtual host (if any). Of course, you could specify a complete URL as well:

```
DirListCSS=http://www.myserver.net/mycustomstyle.css
```

This way, you will avoid any path-related troubles (you would just have to make sure that "www.myserver.net" is resolvable by anyone).

Applying a custom CSS require to know at least the original names of used classes. You can find them in the default Grumpy style, which is presented below:

```
body {
    color: #000000;
    background-color: #DADAFF;
    margin: 1em 0.5em 1em 0.5em;
}
a:link {color: #0505FF}
a:visited {color: #0000DF}
a:active {color: #0000FF}
a:hover {color: #4040FF}
table.ContentTable {
    padding: 0;
    border-spacing: 0;
    width: 100%;
    background-color: #EAEAFF;
    border: 1px solid #000000;
    margin: 0 0 0 0;
}
td.CurrentURL {
    padding: 0.1em 0.5em 0 0.5em;
    font-weight: bold;
    font-size: 1.2em;
}
td.DescriptionURL {
    padding: 0.1em 0.5em 0.1em 0.5em;
    font-style: italic;
}
td.ErrorMessage {
    background-color: #D00000;
    font-weight: bold;
```

```
    text-align: center;
    color: #FFFF20;
    padding: 0.1em 0.5em 0.1em 0.5em;
}
td.EmptyDirectoryMsg {
    background-color: #E1E1FA;
    font-weight: bold;
    text-align: center;
    padding: 0.1em 0.5em 0.1em 0.5em;
}
td.ColHeaders {
    background-color: #C2C2EF;
    padding: 0.1em 0.5em 0.1em 0.5em;
    font-weight: bold;
}
td.DarkEntry {
    background-color: #E1E1FA;
    padding: 0.1em 0.5em 0.1em 0.5em;
}
td.LightEntry {
    background-color: #EAEAFF;
    padding: 0.1em 0.5em 0.1em 0.5em;
}
table.FooterTable {
    width: 100%;
    border: 0;
    padding: 0;
    margin: 0 0 0 0;
    border-spacing: 0;
}
td.FooterLeft {
    text-align: left;
    color: #404040;
    font-size: 0.8em;
}
td.FooterRight {
    text-align: right;
    color: #404040;
    font-size: 0.8em;
}
a.HomepageLink {
    color: #404040;
    text-decoration: none;
}
```

## HTTP Authentication

Basically, two authentication methods exist in HTTP/1.1: the "basic" method, where the username and password are transmitted in plaintext, and the "digest" method, where the username and password are replaced by their MD5 hash. Grumpy supports only the first one (don't worry, the digest one isn't much more secure anyway).

### How does it work?

When a particular resource has been protected using basic authentication, Grumpy sends a 401 Authentication Required header with the response to the request, in order to notify the client that user credentials must be supplied in order for the resource to be returned as requested.

Upon receiving a 401 response header, the client's browser, if it supports basic authentication, will ask the user to supply a username and password to be sent to the server. If you are using a graphical browser, such as Netscape or Internet Explorer, what you will see is a box which pops up and gives you a place to type in your username and password, to be sent back to the server. If the username is in the approved list, and if the password supplied is correct, the resource will be returned to the client.

Because the HTTP protocol is stateless, each request will be treated in the same way, even though they are from the same client. That is, every resource which is requested from the server will have to supply authentication credentials over again in order to receive the resource. Fortunately, the browser takes care of the details here, so that you only have to type in your username and password one time per browser session - that is, you might have to type it in again the next time you open up your browser and visit the same web site.

Along with the 401 response, certain other information will be passed back to the client. In particular, it sends a name which is associated with the protected area of the web site. This is called the realm, or just the authentication name. The client browser caches the username and password that you supplied, and stores it along with the authentication realm, so that if other resources are requested from the same realm, the same username and password can be returned to authenticate that request without requiring the user to type them in again. This caching is usually just for the current browser session, but some browsers allow you to store them permanently, so that you never have to type in your password again.

### How to set up authentication?

All you have to do is put a ".grumpy.auth" file in the directory which access to has to be restricted (that file will contain any authorized credentials). Note, that Windows Explorer won't let you create a file beginning with a dot - if you run Grumpy on Windows, you will have to use some tricks to do it, like creating the file from the command-line, with the command "echo. > .grumpy.auth".

Such .grumpy.auth file would have the following structure (any line beginning by a "#" character is ignored):

```
# Authentication file for Grumpy
realm=Password, please!
John:blahblah
Kim:white kitty
```

The realm token defines the realm (surprising, isn't it?). Usually the user's browser will display the realm in the popup window asking for credentials. Then, we have the list of users (with their passwords) which are allowed to access the given location. The syntax is very simple: "user:password". From the example above, we see that the users allowed to access the location are "John" and "Kim". John's password is "blahblah", while Kim's is "white kitty". Note, that the system is case-sensitive! A single ".grumpy.auth" file restricts the access to its own directory, as well as any subdirectories (unless these subdirectories have their own ".grumpy.auth" files). Of course, the ".grumpy.auth" file is not retrievable via HTTP nor gopher. If someone request it, Grumpy will output a 404 error. Take care to not leave any (renamed) copy of the file ".grumpy.auth", as it would be readable by anyone!

### Brute-force protection

The HTTP authentication scheme is by nature vulnerable to brute-force attacks. The attacker would just have to try various combinations of logins and passwords the fastest he is able to. Grumpy is aware of such nasty behavior, and apply a simple (but efficient) protection against that issue: any request asking for a protected content and coming with false credentials will be responded with a delay of 2 seconds. Note, that 2 seconds is a very long time to wait for a brute-force attacker.

### Attention:

The password is passed from the client to the server in plain text across the network. Anyone listening somewhere in the packet's way with any variety of packet sniffer will be able to read the username and password in the clear as it goes across.

Not only that, but remember that the username and password are passed with every request, not just when the user first types them in. So the packet sniffer need not to be listening at a particularly strategic time, but just for long enough to see any single request come across the wire.

And, in addition to that, the content itself is also going across the network in the clear, and so if the web site contains sensitive information, the same packet sniffer would have access to that information as it went past, even if the username and password were not used to gain direct access to the web site.

Is there any solution to these security risks? Of course! The big trouble here is the possibility to capture clear traffic directly from the wire. The ultimate solution is simply to encipher your http traffic into SSL packets. That's what we commonly call "HTTPS" (that is, HTTP over SSL). Read the HTTPS-related chapter of this manual to discover how to turn Grumpy into a secure HTTPS server.

## CGI support

Grumpy supports CGI application, although it covers only a limited amount of functionalities. The only supported CGI programs are applications which output text data (binary data won't be interpreted properly by the Grumpy's CGI parser). Fortunately, CGI scripts outputting binary stuff are rather rare. Note, that CGI support is not available on the Windows port of Grumpy.

The CGI standard defines few ways of providing input data to the CGI application: the GET and POST methods. The GET method transfers data via URL parameters, thus the amount of data is limited (typically no more than 256 bytes). The POST method is more efficient, and transfers data as a response's payload. Grumpy supports only the GET method (on the other hand, it makes him more secure).

### Let's see how does CGI work.

Each time a client requests the URL corresponding to your CGI program, the server will execute it in real-time. The output of your program will go more or less directly to the client.

The web server (in our case Grumpy), may provide some informations to the CGI application - either by launching it with some command-line parameters, or setting some environment variables. Basically, if the client's request doesn't contain any (non-encoded) "=" character in the URL, then all URL parameters will be used as command-line parameters of the CGI script. For example, a "GET /cgi-bin/myscript.cgi?param1&param2" request will let Grumpy execute "myscript param1 param2". If any "=" character is found in the request, then no command-line parameters are provided. Grumpy will set several environment variables, which can be reused by the called CGI script:

<b>QUERY_STRING</b>	The URL parameters, as provided by the client
<b>SERVER_SOFTWARE</b>	The name and version of the server software
<b>SERVER_NAME</b>	The server's hostname, DNS alias, or IP address, used for self-referencing links
<b>GATEWAY_INTERFACE</b>	The revision of the CGI specification, as supported by the server
<b>HTTP_USER_AGENT</b>	The client's user-agent
<b>SCRIPT_NAME</b>	Script name (for self-referencing links)
<b>REQUEST_METHOD</b>	The request method (GET, HEAD, POST...)
<b>SERVER_PROTOCOL</b>	The HTTP protocol version of the client's query
<b>HTTP_VERSION</b>	Same as SERVER_PROTOCOL
<b>HTTP_COOKIE</b>	The client's cookie
<b>HTTP_REFERER</b>	The HTTP referer
<b>AUTH_USER</b>	The authenticated user (if there was any authentication)
<b>REMOTE_USER</b>	Same as AUTH_USER
<b>AUTH_TYPE</b>	The authentication type used to authenticate the user (BASIC, DIGEST...)

Note, that some other environment variables may be set by the superset (that is, inetd/xinetd, or any mechanism alike). Here are all variables which may be set:

<b>SERVER_PORT</b>	The port number to which the request was sent
<b>REMOTE_HOST</b>	The hostname making the request.
<b>REMOTE_ADDR</b>	The IP address of the remote host making the request
<b>REMOTE_IDENT</b>	User name retrieved from the server via the identification mechanism described by the RFC 931

When it comes to answer to the client, the CGI application will output a (partial) HTTP header, which should contain at least the "Content-Type" statement. This header will be followed by an empty line (which tells to the server that the header is over), and then will come the document which has to be transmitted to the client. Grumpy will analyze the header transmitted by the CGI application and will complete it with all lacking informations (the status code, HTTP version, etc).

As we just said, Grumpy is parsing the HTTP header returned by the CGI applications, and completes it when necessary. But there are situations where such behavior is unwanted (for example if the script undertakes to print the entire HTTP response including all necessary header fields.). That's what we call NPH scripts (NPH stands for "No Parsed Headers"). Grumpy is supporting such CGI applications - all we have to do, is name these particular programs starting with "nph-" (like "nph-myscript.cgi"). Grumpy is thereby instructed not to parse the headers (as it would normally do) nor add any which are missing. If you are going to use NPH, be sure to read and understand the HTTP spec (<http://www.w3.org/Protocols/>). Your headers should be complete and accurate, because you're instructing the Grumpy web server not to correct them or insert what's missing.

Here are some useful CGI references:

- The Common Gateway Interface <<http://hoohoo.ncsa.uiuc.edu/cgi/>>
- CGI Made Really Easy <<http://www.jmarshall.com/easy/cgi/>>
- CGI and Environment Variables <<http://www.cs.cf.ac.uk/Dave/PERL/node200.html>>



## Virtual Hosts configuration

Virtual hosting is a method that servers such as web servers use to host more than one domain name on the same computer, often on the same IP address. For example, it is often desirable for companies sharing a web server to have their own domains, with websites accessible as `www.company1.com` and `www.company2.com`, without requiring the user to know any extra path information. For `www.company1.com`, the server would send the HTML file from the directory `/var/www/user/Joe/site/`, while requests for `www.company2.com` would make the server serve pages from `/var/www/user/Mary/site/`.

With web browsers that support HTTP/1.1 (as nearly all now do), upon connecting to a webserver, the browsers send the address that the user typed into their browser's address bar (the URL). The server can use this information to determine which web site, as well as page, show to the user.

Okay, but how do I configure Grumpy to act in such a smart way? Well, you will be surprised to see how easy it is! The only thing to do, is to add a `vhost` entry to your `grumpy.cfg` configuration file. There comes an example:

```
vhost:www.mysite.com=/var/www/mysite/
```

That short entry is telling Grumpy to look into the `/var/www/mysite/` directory for any request addressed to `www.mysite.com`. Of course, any other requests will still be answered using the default `RootDir` directive. You may add several `vhost` entries into your configuration file.

## Domain redirection

If one wants to permanently forward an entire web site to a new server (or hostname) permanently and have the search engines update their database, one should use a 301 redirect. The 301 redirect code is the most efficient and search engine friendly method for webpage redirection. The code "301" is interpreted as "moved permanently". So much for the theory.

Let's say, that you are using the domain `www.blahblah.org`. One day, you want to change your domain name to `www.mumbo-jumbo.net`. You will definitely get in troubles, as all people who bookmarked your site will still come to the first domain, and search engines will do the same. There Grumpy comes to your help – it allows you to configure a redirection for an entire domain. It'll be done using a directive of the following form:

```
RedirectDomain:www.blahblah.org=www.mumbo-jumbo.net
```

With such directive, any request addressed to `www.blahblah.org` will be redirected to `www.mumbo-jumbo.net`. Note, that the full URL will be preserved during the redirection! For example, a client requesting `http://www.blahblah.org/image/pic.png` will be redirected (via a 301 code) to `http://www.mumbo-jumbo.net/image/pic.png`. The whole process is completely transparent for the end-user.

Another cool way of using domain redirects is setting a redirect for your domain name to your `www` host. That's how I did it for my domain:

```
RedirectDomain:grumpy-server.net=www.grumpy-server.net
```

This way any user coming to `grumpy-server.net` will be automatically switched to `www.grumpy-server.net`.

Obviously, you can't redirect a single page with that method, as it's applied to the whole domain. If you would like use a similar mechanism to redirect clients coming to a specific page of your web site, I would recommend you to put such code in the `<head>` section of your html file:

```
<meta http-equiv="Refresh" Content="0; URL=http://www.company.com/dir1/">
```

This tells to the browser to refresh the page immediately with the new specified URL. It forwards a single page only and not the entire domain. It can be used for example to forward the default home page of the domain, giving the appearance of forwarding the whole domain.

## Automatic language detection

Language negotiation is a function of the HTTP protocol which lets a server choose among several language versions of a page, based on the URL and on preference information sent by the browser (specifically in the Accept-Language header).

Grumpy is able to detect the preferred language of the user, and redirect the browser to another resource (using a HTTP 302 redirection), if a translated version of the original file is available. To make Grumpy look after the user's language, you will have to create a specific file in the directory that serves multilingual content. This particular file has to be named "grumpy.lang", and will contain all possible redirections to translated files. Here is an example for such language configuration file:

```
# This is a comment
index.htm:fr=index_fr.htm
my_dog.html:de=mein_hunde.html
my_dog.html:pl=moj_pies.html
my_dog.html:ru=moj_sobaka.html
```

In this example, we see that the file index.htm is available in french (under index\_fr.htm), and that the resource called "my\_dog.html" is available in few languages as well (german, polish, russian). Every line beginning by a hash character (#) is ignored, and can be used to write some comments.

## MIME support

MIME is used to determine various bits of "meta information" about documents. This information relates to the content of the document and is returned to the HTTP browser via the "Content-Type" header (most browsers will use this additional information to process the file in a specific way).

Grumpy may detect MIME types in two ways. The first is to scan the file against an internal "signatures" base to determine the file type (if no signature match, then no Content-Type will be advertised). This behavior is not modifiable, although it may be completely disabled via the "AutoMIME" configuration token. The second way is to use user-defined extensions to advertise a particular content-type. A set of user-defined extensions is already pre-configured in the default configuration file. Below is the configuration section related to MIME configuration:

```
## MIME support ##
# Grumpy features MIME support. MIME properties may be handled in two different
# ways: either automatically (Grumpy scans each file to find out what
# content-type to advertise) or user-defined (the user has to bind specific
# MIME types to given file extensions). Note, that if you define a given
# filetype, then this filetype won't be processed by AutoMIME anymore.
# There you can switch on/off the automatic MIME scanner (enabled by default,
# 1 = enabled, 0 = disabled):
AutoMIME=1
# Below you may add any custom filetype you need (see default settings to get
# the idea):
AddMimeExt:css=text/css
AddMimeExt:djvu=image/vnd.djvu
AddMimeExt:dxf=image/vnd.dxf
AddMimeExt:htm=text/html
AddMimeExt:html=text/html
```

Note, that if a file match a user-defined pattern (eg. a "txt" file in default server's configuration), then it won't be processed by the AutoMIME mechanism.

Below you will find the exhaustive list of MIME types detected by the Grumpy's AutoMIME module. Note, that some of these MIME types will be verified only if the filename has a particular extension. It is a required restriction, as otherwise general containers would match for wrong files (eg. the \*.zip signature would match OpenOffice documents, MS Office 2007 files, JAR Java packages, etc).

File format	Ext.	MIME
7-zip archive	*.7z	application/x-7z-compressed
Sun Microsystems audio file	*	audio/basic
Microsoft BMP image	*.bmp	image/x-ms-bmp
Bzip2 archive	*	application/x-bzip
Debian package	*	application/x-deb

Adobe Encapsulated PostScript	*.eps	image/x-eps
Famicom Disk System ROM	*	application/x-nes-disk
FLAC audio file	*	audio/x-flac
Macromedia Flash video	*	video/x-flv
GIF image	*	image/gif
GZip archive	*	application/x-gzip
ICO (MS) icon	*	image/vnd.microsoft.icon
iNES ROM	*	application/x-nes-rom
IT music module	*.it	audio/it
JAR Java archive	*.jar	application/java-archive
Java class	*	application/x-java-vm
JPEG image	*	image/jpeg
MIDI music	*	audio/midi
MS Word document (< 2007)	*	application/msword
MS Excel document (< 2007)	*	application/vnd.ms-excel
MS Powerpoint document (< 2007)	*	application/vnd.ms-powerpoint
MS Word 2007/2008 docx	*.docx, *.docm	application/vnd.openxmlformats-officedocument.wordprocessingml.document
MS Excel 2007/2008 xlsx	*.xlsx	application/vnd.openxmlformats-officedocument.spreadsheetml.sheet
MS Powerpoint 2007/2008 pptx	*.pptx	application/vnd.openxmlformats-officedocument.presentationml.presentation
NES sound file	*	application/x-nes-sound-file
Ogg container	*	application/ogg
OpenOffice presentation (template)	*	und.oasis.opendocument.presentation-template
OpenOffice spreadsheet (template)	*	und.oasis.opendocument.spreadsheet-template
OpenOffice graphic (template)	*	und.oasis.opendocument.graphics-template
OpenOffice formula (template)	*	und.oasis.opendocument.formula-template
OpenOffice chart (template)	*	und.oasis.opendocument.chart-template
OpenOffice image (template)	*	und.oasis.opendocument.image-template
OpenOffice text (template)	*	und.oasis.opendocument.text-template
OpenOffice presentation	*	und.oasis.opendocument.presentation
OpenOffice text (master file)	*	und.oasis.opendocument.text-master
OpenOffice spreadsheet	*	und.oasis.opendocument.spreadsheet
OpenOffice database	*	und.oasis.opendocument.database
OpenOffice graphic	*	und.oasis.opendocument.graphics
OpenOffice text (web)	*	und.oasis.opendocument.text-web
OpenOffice formula	*	und.oasis.opendocument.formula
OpenOffice chart	*	und.oasis.opendocument.chart
OpenOffice image	*	und.oasis.opendocument.image
OpenOffice text	*	und.oasis.opendocument.text
PCX image	*	image/x-pcx
PDF document	*	application/pdf
PNG image	*	image/png
QuickTime movie	*	video/quicktime

RAR archive	*.rar	application/x-rar-compressed
RA RealMedia streaming audio file	*	audio/x-realaudio
RM RealMedia streaming media file	*	audio/vnd.rn-realmmedia
RPM package	*	application/x-rpm
RTF document	*	text/rtf
SWF - Shockwave flash	*	application/x-shockwave-flash
TAR archive	*.tar	application/x-tar
TIFF image	*	image/tiff
TXT plain text	*.txt	text/plain
WAVE audio	*	audio/x-wav
ZIP archive	*.zip	application/zip
ZOO archive	*.zoo	application/x-zoo

This table may seem to be completely unsorted, but that's not the case. In fact, all MIME types are listed in the order in which they are checked in the source code. ;-)

## Bandwidth stealing prevention

Bandwidth stealing (or "hot linking") is a scenario where some other site uses files hosted on your site. This results in bandwidth stealing as every time the hot linked page is viewed, images or files are requested from your server hence your bandwidth is used.

The Grumpy server allows to prevent bandwidth theft in the following way: for each request, it checks whether the referer of the request points to the same domain name the resource is stored on. To activate this protection, you will have to use the "BlockedMediaFromOtherReferer" and (optionally) the "RefererWhitelist" tokens of the Grumpy's configuration file.

Say, that you would like to protect all your JPEG and PNG files from being hot linked by others, but allowing hotlinking from [www.myfavoriteforum.net](http://www.myfavoriteforum.net) and [www.somedomain.org](http://www.somedomain.org). Here is the requiried configuration:

```
BlockedMediaFromOtherReferer=(image/jpeg),(image/pjpeg),(image/png)  
RefererWhitelist=(www.myfavoriteforum.net),(www.somedomain.org)
```

Note, that file types have to be specified by their MIME types (that's why JPEG type has two entries, one for regulare JPEG images, and one for progressive JPEGs). This also mean that Grumpy has to know what the files are, thus you probably will need to make sure that the AutoMIME feature is activated, or add some MIME types by hand to the configuration file.

As shown in the example, all MIME types and domains have to be written between parenthesis.

Each time that a bandwidth theft attempt will be detected for specified file types, Grumpy will answer to the request by a 403 ("Forbidden") HTTP code.

Keep in mind, that the Grumpy's bandwidth stealing prevention system won't react in some cases: when the request comes without a "Host" header (typically when the client uses the HTTP/1.0 protocol), or when the request comes without a "Referer" header. However, it does the job in the great majority of cases.

## HTTP headers customization

First of all, what a HTTP header is? HTTP Headers form the core of an HTTP request, and are very important in an HTTP response. They define various characteristics of the data that is requested or the data that has been provided (data encoding, caching, authentication...). The headers are separated from the request or response body by a blank line. HTTP headers are invisible to the final user, as the user will see the document transferred in the HTTP body, without caring about the way it came in.

There is a simple example of a HTTP response:

```
HTTP/1.1 200 OK
Date: Mon, 23 May 2005 22:38:34 GMT
Server: Grumpy/0.17
Connection: close
```

Then, why one would want to customize anything there? To tell you the truth, there's no "practical" point in doing that, as the vast majority of users won't ever notice it anyway. However, it might be a cool information for people looking to the transferred data at the HTTP level (yes, it happens to me very often).

Grumpy lets you define few custom headers: X-Powered-By, X-Hosted-By, X-Server-Admin, X-Disclaimer. For example, a customized server response could look like:

```
HTTP/1.1 200 OK
Date: Mon, 23 May 2005 22:38:34 GMT
Server: Grumpy/0.17
Connection: close
X-Disclaimer: The administrator of this server is not aware of its content!
```

To make Grumpy answer with such "X-Disclaimer" header, you would have to add the following directive to the configuration file (grumpy.cfg):

```
x-disclaimer=The administrator of this server is not aware of its content!
```

Last, but not least, please keep in mind that the RFC 2616 specify that HTTP headers shouldn't contain characters out of the ISO-8859-1 set, unless specifically encoded.



## Customizing error pages

Grumpy does support customization of the returned error pages. The following error pages are customizable: 400, 401, 403, 404. By default, when one of these errors occurs, Grumpy returns a 4xx code with a html page containing a bare explanation of what happened. You can replace these defaults page by anything you like, by creating a directory called ".errors" in the root directory of your web server (or the root of your virtual host server if you are using the virtual host feature), and place one or several files named "400.htm", "401.htm", "403.htm" and "404.htm". If you're using virtual hosts, then each virtual host will use a distinct set of custom error pages.

Note, that if you are going to use any pictures or links on your custom error pages, you will need to use full (absolute) paths only (relative paths won't work, as the remote browser won't be aware of the existence of the ".errors" subdirectory).

### Example

Say, you would like to change the default 404 error page to something nicer than just "Not found". We assume that your root path is /var/www/. You will have to make your custom 404 html page first, name it "404.htm" and put it into the directory /var/www/.errors/ (you will probably have to create the ".errors" directory before). That's all!

## Banning specific user-agents

You have probably already noticed, that when a web server is put online, there are many suspicious requests coming to it. These requests are often generated by some web spiders, spam email-collectors, etc. These requests often contains a specific HTTP header called "User-Agent", which is meant to declare what software has forget the request.

Grumpy is able to block (ban) any chosen User-Agent. In its default configuration, Grumpy bans some HTTP security scanners. If you would like to modify the list of banned User-Agents, you will have to edit the "BannedUserAgents" parameter of the configuration file. That option takes as a value a list of User-Agents to ban, separated by pipe characters ("|"). Say, you would like to ban any User-Agent containing words "Microsoft" or "IE 6". All you would have to do, is write the following line in the grumpy.cfg file:

```
BannedUserAgents=Microsoft|IE 6
```

Be careful when adding banned user-agents, as Grumpy is checking if the specified string is contained in the user-agent header declared by the remote machine. It means, that adding "a" as a banned user-agent would ban all user-agents containing the letter "a" (like "Mozilla", "Opera", "Arachne", etc...). Banned user-agents are checked in a case-insensitive way.

The Grumpy's banning behavior is quite impolite, therefore you shouldn't use it for any other purpose than banning a dangerous or ill-intentioned user-agent! Technically speaking, when Grumpy gets a request coming from a banned user-agent, it makes the remote machine waiting for 2 seconds, sends a 403 error code (403 means "Forbidden"), and closes the connection.

**Attention:** Banning user-agents is not a protection of any kind, and shouldn't be used as such! Banning system will probably discourage most of script kiddies, and save a bit of your bandwidth, CPU processing power and HDD activity. Don't expect anything more.

## Turn Grumpy into a HTTPS server

### What is it all about?

Reading the title of this chapter, you probably thought "Wow, does Grumpy really support SSL ciphering?". Well... the simple answer is "yes", although it is not technically true.

I won't explain here how does SSL works, nor how certificate are used to encipher and authenticate hosts, as these subjects are far beyond the scope of this manual. However, we will see how to create a SSL certificate using OpenSSL, and how to wrap Grumpy into an SSL communication.

First of all, we need to know (barely) what's the benefit of using SSL. We all know that HTTP communication is transferred as clear-text over the wires. That means that anybody who has a physical access to your wire, will be able to see what transit between you and the HTTP server you are connected to. Obviously, that includes any passwords you could provide to authenticate yourself. The solution to this problem is quite simple: use an end-to-end encryption mechanism, which will transport your HTTP traffic (in this case, the encryption mechanism will be SSL). Of course, if you don't care about that (eg. you host a website with public accesses only), then you won't have much benefits from SSL (apart authenticating the server to avoid any possible spoofing, but again – it won't be discussed here). You probably already guessed, that HTTP encrypted over a SSL tunnel is what we commonly know as "HTTPS".

Here we are again: How do I turn Grumpy into a HTTPS server? As said before, Grumpy itself doesn't provide any SSL support, as it works on clear-text communication only. However, we can use any SSL wrapper to tunnel Grumpy through a secure (enciphered) channel. For the needs of this manual, we will discover how to configure a HTTPS server using Grumpy, the Stunnel wrapper, and the OpenSSL suite in a Linux environment (really, it is not as hard as it sounds).

### Install the Stunnel wrapper

There's no general guide-line for installing Stunnel on your server system. It will mostly depends of your operating system. You may install it from sources, or apply the Stunnel package, or copy the required binaries, etc... If you're using a Debian Linux operating system, you can easily install the whole Stunnel package using the command below:

```
apt-get install stunnel
```

On other systems, you will probably have equivalent commands. Check your system's handbook for details.

### Generate your own SSL certificate

SSL is based on a public key infrastructure, which means that we will need a pair of keys – a private one, and its public equivalent. Sorry for this techy language... it's not so important anyway

– all you have to remember, is that you will need a certificate file, which will contain your keys, plus some other informations (Diffie-Hellman parameters...). Before starting, you will have to check whether your system has an OpenSSL installation or not (it's enough to check if you get something after typing the "openssl" command from within your shell). If not, install it now.

To generate a valid SSL certificate containing both your private and public key, you can use a command of the following syntax:

```
openssl req -new -x509 -days 365 -nodes -config stunnel.cnf -out stunnel.pem
-keyout stunnel.pem
```

This creates a private key, and a self-signed certificate. The arguments mean:

-days 365	make this key valid for 1 year, after which it's not to be used anymore (you may want to increase this value)
-new	Generate a new key
-x509	Generate an X509 certificate (self sign)
-nodes	Don't put a password on this key (otherwise you would have to manually type the certificate's password at each Stunnel call)
-config stunnel.cnf	the OpenSSL configuration file to use (you will find it somewhere in your Stunnel installation)
-out stunnel.pem	where to put the SSL certificate
-keyout stunnel.pem	put the key in this file (keep the same than above)

The OpenSSL generator will ask you few questions, and one of them will be to give a "Common Name" (or CN) to your certificate. This is quite important, as this parameter is carefully checked by all modern web browsers. The "Common Name" has to be exactly the machine's host name, as used by the final client to access your server (in most cases it will be its FQDN, like "www.mysecuresite.net", but it could be also its IP, if clients will access the site typing the site's IP in their URL bar). If the certificate's Common Name would not match the FQDN used by the remote client to reach your site, the user's browser will display a warning, telling that the certificate presented by your server is wrong.

Note, that Stunnel will often need some DH parameters, too. DH stands for "Diffie-Hellman", it is a cryptographic protocol that allows two parties that have no prior knowledge of each other to jointly establish a shared secret key over an insecure communications channel. These DH parameters have to be in the same file than the server's certificate. To generate DH parameters for our freshly created certificate, we will use the following command:

```
openssl gen dh 512 >> stunnel.pem
```

It may happen that your specific installation of Stunnel doesn't require DH parameters, but it won't harm to have them in the file anyway.

If you would like to know how to generate a more specific certificate (choose the algorithm,

key length, etc..), go read the OpenSSL documentation.

The procedure explained above will provide you with a custom, self-signed certificate. Anyone can make a self-signed certificate. It is a totally valid SSL certificate. However most SSL clients (browsers) wish to verify the identity of the organization that signed the certificate. These SSL clients often have a hard-coded list of organizations (Certificate Authorities) that sign keys after doing background checks, etc.

Since the key and certificate you just generated are not in the hard-coded list that your SSL client uses, you will get either an error or warning message when attempting to connect to your HTTPS website. If you wish to interact with third-party clients that have hard coded lists of acceptable Certificate Authorities, and you do not want annoying dialog boxes popping up for the user on the first (or all) connections, then yes, you will have to have your key signed by a valid Certificate Authority. Unfortunately, it won't be free. It won't be cheap either.

### Configure the HTTPS access

Once you installed Stunnel, and generated an appropriate certificate for your server, you have to configure your system to listen on a specific port and forward any incoming connections to Grumpy, passing first through the Stunnel wrapper. There are several ways to achieve that, I will present one of them, which is using the xinetd super-server.

In fact, configuring xinetd to use Stunnel is not harder than configuring a bare (HTTP) Grumpy server. The whole point is to tell xinetd to pass any streams coming to a specific port (usually, you will want to use the standard TCP/443 port) to STUNNEL, which will have to be instructed to forward the stream to Grumpy, assuring the encryption/decryption on the fly.

Here is a simple example of a xinetd section for a HTTPS service using Stunnel and Grumpy:

```
service https
{
    disable = no
    socket_type = stream
    protocol = tcp
    wait = no
    user = www-data
    server = /usr/bin/stunnel
    server_args = -l /sbin/grumpy -p /etc/ssl/certs/stunnel.pem
    instances = 100
    per_source = 20
    log_type = FILE /var/log/xinetd-grumpy-ssl.log 500K 10M
    log_on_success = HOST PID DURATION
    log_on_failure = HOST
}
```

Of course, you may have to adjust it depending of your system's configuration. Important things here are "https", "www-data" and (obviously) the paths to the Stunnel and Grumpy binaries, and your certificate file. "https" is the name of the service on which xinetd has to listen on (typically, "https" should be binded to the port 443 via your "/etc/services" file). "www-data"

is the user which has to be used to run the Stunnel instance. For testing purpose, you could use the root user, although it is not recommended to run any public service with root rights!

If you would like to have more details, go read the documentation of xinetd and/or Stunnel.

### **Why can't I use SSL with virtual hosts?**

The reason is very technical, and a somewhat "chicken and egg" problem. The SSL protocol layer stays below the HTTP protocol layer and encapsulates HTTP. The SSL session is a separate transaction, that takes place before the HTTP session has begun. The server receives an SSL request on a specific IP. Since the SSL request does not contain any Host: field, the server has no way to decide which SSL certificate to use, because he would need to know the content of the "host" HTTP header. Obviously, this "host" header can't be provided until the SSL session is established... You can, of course, use Virtual Hosting to identify many non-SSL virtual hosts (all on port 80, for example) and then have a single SSL virtual host (on port 443).

### **Last thoughts**

Keep in mind, that using SSL encryption is a very demanding (cpu-eating) process. Using SSL on top of Grumpy will slower your server's response times (higher latency), as well as its overall speed. My final advice would be "do not use SSL if you don't need it".

Besides that, please note, that the Grumpy server does not contain any cryptography itself. However, remember that import and/or export of cryptographic software, code providing hooks to cryptographic algorithms, and discussion about cryptography is illegal in some countries. It is imperative for you to know your local laws governing cryptography. I am not liable for anything you do that violates your local laws.

## Frequently asked questions (FAQ)

Q: Does Grumpy support special (nationalized) character sets in file names?

A: *Yes, it does. Grumpy implements support for the UTF-8 encoding, therefore it is able to handle any existing language. Note, that it requires the local server's filesystem to be using UTF-8, too, otherwise only the basic ASCII set will be handled properly.*

Q: Can I use Grumpy for commercial purpose, or adapt it to my own needs?

A: *Yes, you definitely can. Grumpy is released under the GPLv3 license, therefore everyone is free to use it, modify it, and even sell it. However, you can't claim that you are the author of this software, and you must provide the source code of any modification you do on it (and you can't ever drop the GPL licensing). Note, that if you add any feature or fix to Grumpy, I would be happy to add your code to the “official” release.*

Q: How do I run PHP on Grumpy?

A: *You can't. Sorry. I wrote Grumpy with simplicity in mind, and adding PHP support would be a mess. However, you can use CGI scripts instead. CGI will provide you very similar possibilities to PHP.*

Q: What's the maximum file size that Grumpy can serve?

A: *Grumpy itself can serve files that are up to 8 exbibytes (EiB) big. However, there are chances that your filesystem will limit you much sooner (for example EXT3 supports files up to 2 TiB of size, while EXT4 supports files up to 16 TiB).*

## Legal mumbo-jumbo

Copyright © Mateusz Viste 2008, 2009, 2010, 2011

<http://www.viste-family.net/mateusz/software/grumpy/>



All rights reserved. This product or documentation is protected by copyright and is distributed under licenses restricting its use, copying, distribution and decompilation. See the GNU General Public License as published by the Free Software Foundation, either version 3 of the License, or (at your option) any later version for details.

The copyright owner gives no warranties and makes no representations about the contents of this manual and specifically disclaims warranties of merchantability or fitness to any purpose.

The copyright owner reserves the right to revise this manual and to make changes from time to time in its content without notifying any person of such revision or changes.

### Trademarks

Unix is a registered trademark of UNIX System Laboratories, Inc. Windows, WindowsNT, and Win32 are registered trademarks of Microsoft Corp. All other product names mentioned herein are the trademarks of their respective owners.